

## Research Article

# Identification of KUP/HAK/KT Potassium Transporter Gene Family in Wild Carrot (*Daucus carota*) and Its Phylogenetic Analysis

Mazhar MW\*, Batool MS, Saleem T, Mahmood J, Saif S, Waqas N, Tahir H and Mazhar F

Department of Bioinformatics and Biotechnology, Government Collage University, Pakistan

\*Corresponding author: Muhammad Waqar Mazhar, Department of Bioinformatics and Biotechnology, Government Collage University, 38000 Faisalabad, Pakistan

Received: May 11, 2021; Accepted: June 04, 2021;

Published: June 11, 2021

## Abstract

Potassium is essential macronutrient of plant. It is uptaken by plant through channels and transporters. Plants specie genomes contains a number of KUP/HAK/KT transporters having the primary function to mediate K<sup>+</sup> fluxes. In this study, we have identified 13 gene members of KUP/HAK/KT transporter gene family. In most of the plant species, these genes have been characterized but uncharacterized in *D. carota*. This study has been done to identify KUP/HAK/KT gene family in *D. carota* plant species to study its phylogeny. This gene family is important for potassium uptake and play an important role in translocation, osmotic potential regulation, plant development and growth. Different tools like MEGA 7.0.21, pfam, SMART and NCBI-BLASTp has been used to characterize the gene family. This study covers the phylogeny and evolution of KUP/HAK/KT transporters in *D. carota* with reference to *A. thaliana*.

**Keywords:** K<sup>+</sup> ion; *A. thaliana*; *D. carota*; KUP/HAK/KT; Phylogeny

## Introduction

Potassium ion (K<sup>+</sup>) being the essential macronutrient is found very important for various aspects of plant life. In plants, potassium concentration may reach up to 8% of dry cell weight. Potassium is the most plentiful cation that maintains the electrical charge balance and transport of sugar and nitrate in plant cells [1]. It may act as protein synthesis stabilizer or enzyme activator. It is involved in metabolic and physiological processes, such as photosynthesis, cellular osmoregulation and respiration [2]. potassium deficiency highly affects the plant growth and development as they pertain many abiotic stresses like salth stress, drought stress and cold stress [3]. Potassium is found in bulk amount in earth crust and the uptake of potassium from soil is not as good as it to be because potassium is not in ionic form. The concentration of potassium at root surface is mostly lower than in bulk soil solution which may fall down to μM range. To enhance the potassium uptake, plant have developed various mechanism for potassium acquisition with >1000-fold concentration gradients [4].

Usually there are two mechanisms for potassium uptake in plants. These are high affinity transporter system *via* potassium transporters and low affinity potassium transporters *via* potassium channels. On the basis of function and structure, potassium transporters are divided into five families: 1) shaker channels; 2) TDK (tandem poreK<sup>+</sup>); 3) HAK (high affinity K<sup>+</sup>) /KUP (K<sup>+</sup> uptake permease) /KT

(K<sup>+</sup> transporter); 4) HKT transporters; 5) CPAs (cation proton-antiporters). KUP/HAK/KT is the largest and widely distributed family in bacteria, fungi, and plants. The homology with bacterial KUP and fungal HAK transporters show that the plants KUP/HAK/KT transporter members *AtKUP1* and *HvHAK1* were first cloned from *Arabidopsis* and Barley. Comparative genomic analysis showed that 13, 27 and 27 KUP/HAK/KT genes were identified in *Arabidopsis*, Rice and Maize respectively [5]. Mutation analysis has shown that the 8<sup>th</sup> transmembrane domain and C-terminus of KUP/HAK/KT gene family has a key role in determining the K<sup>+</sup> transport capacity. A series of KUP/HAK/KT genes were identified in past decades and a number of physiological roles of these genes were characterized in plant species. At present, KUP/HAK/KT genes have been identified in other species like poplar (*Populus trichocarpa*), tomato (*Solanum lycopersicum*), pear (*Pyrus bretschneideri*) and soybean (*Glycine max*) [6] (Table 1).

Expression of KUP/HAK/KT is regulated by K<sup>+</sup> starvation, abiotic stresses and phytohormones including ABA, cytokinin, ethylene and NAA. These KUP/HAK/KT proteins shows a great variety of subcellular localization in tonoplast, plasma membrane and endoplasmic reticulum. This gene family have role in plant growth and development. The ubiquitous nature of these genes show that they are very important for plants as they help them in survival in potassium poor environment and in nutrients uptake [4].

**Table 1:** Some major functions relted to KUP/HAK/KT.

Regulation of cell size, auxin distribution or osmotic stress adaptation	(Véry et al., 2014)
Mediate K <sup>+</sup> fluxes	(Ahn et al., 2004)
Subcellular localization (plasma membrane, tonoplast, or other endomembranes)	(Osakabe et al., 2013; Rigas et al., 2001)
Expression patterns (root meristems, vascular tissues, guard cells, fruits, or specialized organs such as flytraps)	(Osakabe et al., 2013; Scherzer et al., 2015)

**Table 2:** Whole Genomic Information about identified genes.

Proposed names	Gene Locus	Protein accession#	RNA accession#	Exons	Chr#	ORF length	Amino acid length	Start of Genomic Location	Conserved domains in protein sequence
DcKUPHAKKT2	DCAR_019813	KZM92822.1	XM_017399321.1	9	6	2349	782	36563422	K_trans
DcKUPHAKKT3	DCAR_014456	XP_017247390.1	XM_017391901.1	9	4	2349	782	21753814	K_trans
DcKUPHAKKT1	DCAR_007762	XP_017231954.1	XM_017376465.1	8	2	2277	758	36900730	K_trans
DcKUPHAKKT2	DCAR_023264	XP_017255168.1	XM_017399679.1	9	6	2475	824	196829	K_trans
DcKUPHAKKT1	DCAR_007096	XP_017232096.1	XM_017376607.1	8	2	2403	800	31460152	K_trans
DcKUPHAKKT2	DCAR_031093	XP_017224518.1	XM_017369029.1	9	9	2340	779	32656696	K_trans
DcKUPHAKKT3	DCAR_024139	XP_017218890.1	XM_017363401.1	8	7	2343	780	9796649	K_trans
DcKUPHAKKT1	DCAR_001786	XP_017225142.1	XM_017369653.1	10	1	2535	844	20502453	K_trans
DcKUPHAKKT2	DCAR_021857	XP_017258440.1	XM_017402951.1	10	6	2532	843	19110565	K_trans
DcKUPHAKKT8	DCAR_011216	XP_017241396.1	XM_017385907.1	8	3	2325	774	33669288	K_trans
DcKUPHAKKT0	DCAR_001295	XP_017229797.1	XM_017374308.1	8	1	2364	787	4149046	K_trans
DcKUPHAKKT1	DCAR_007784	XP_017236764.1	XM_017381275.1	11	2	2352	783	37055812	K_trans
DcKUPHAKKT12	DCAR_007095	XP_017235837.1	XM_017380348.1	9	2	2526	841	31449412	K_trans

*Daucus carota* is a popular taproot vegetable, a plant rich in many bioactive pigments like carotenoids and lutein, cultivated all over the world [7]. Carotenoid found in flowers and fruits of plant playing major role in photosystems of higher plants. It can enhance the pollination ability of plant and seed dispersal activity. It accumulates in carrot taproot being the major nutrient of carrot taproot and also contributes to carrot taproot color [8].

The analysis is done in comparison with the features of this gene family in *Arabidopsis*. This comprehensive study may provide important information about lineage of KUP/HAK/KT gene family in *Daucus carota* to other species.

## Materials and Methods

### Identification and evolutionary analysis of KUP/HAK/KT genes in *D. carota*

The KUP/HAK/KT potassium transporting genes of *D. carota* were retrieved from NCBI database (<https://www.ncbi.nlm.nih.gov/>). The protein sequence of KUP/HAK/KT potassium transporting genes were retrieved from already known protein sequence of potassium transporter genes in *A. thaliana*. Protein blast (Blastp) was performed against genome database and GenBank to retrieve the protein and DNA sequences of *D. carota*. *A. thaliana* gene sequence were used as query sequence against non-redundant protein sequence of *D. carota*. The retrieved data was manually checked to eradicate the non identical or false positives. The sequences having similarity less than 60% were discarded. Both candidate protein sequences were examined for conserved domains using pfam domain (<http://pfam.xfam.org/>) [9,10] and SMART (SMART: Main page ([embl-heidelberg.de](http://embl-heidelberg.de))) [11] and sequences were filtered to get finer collection of nonredundant gene sequences present in *D. carota*. This process was done to eliminate the sequences having no conserved domains. Multiple sequence alignment was done to confirm the conserved domains in the target plant species *D. carota*. The full length KUP/HAK/KT protein from *A. thaliana* and *D. carota* were aligned in MEGA 7.0.21 software and neighbor joining evolutionary tree were constructed with bootstrapping value of 1000 for phylogenetic analysis [12,13]. NCBI database (<https://www.ncbi.nlm.nih.gov/>) was used to recover

all genomic information of these potassium transporting genes like exon numbers, chromosomal location of gene, protein and RNA accession numbers, amino acid length and ORF length.

### Gene structure analysis

To predict gene structure and their schematic representation, an online freely available server called Gene Structure Display server (GSDS) was used (<http://gsds.gao-lab.org/>) [14].

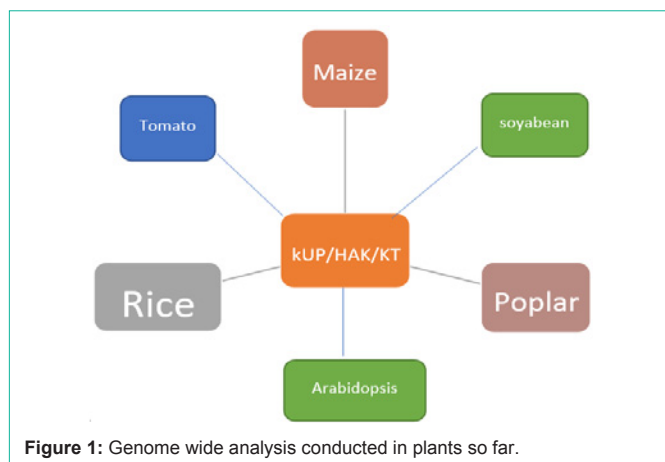
### Trace the different restriction maps and multiple sequence alignment

Different restriction maps were generated of each sequence by using SerialCloner2-6 software [15]. It generated different graphic maps of each sequence of identifies gene sequence. For multiple sequence alignment, a web-based tool called ClustalW (<https://www.genome.jp/tools-bin/clustalw>) was used to align the sequence of target specie [16].

## Results and Discussions

### Identification of KUP/HAK/KT in *D. carota* and conserved domain profile

The KUP/HAK/KT protein sequences of *A. thaliana*, *C. arietinum* and *O. sativa* (Reference species) were retrieved from NCBI. The retrieved AtKUP/HAK/KT sequences were used in NCBI-BLAST search against *D. carota* sequence. After making all queries, 13 members of KUP/HAK/KT gene family were identified out of more than 100 sequences and named as 1) DcKUPHAKKT2, 2) DcKUPHAKKT3, 3) DcKUPHAKKT5.1, 4) DcKUPHAKKT5.2, 5) DcKUPHAKKT6.1, 6) DcKUPHAKKT6.2, 7) DcKUPHAKKT6.3, 8) DcKUPHAKKT7.1, 9) DcKUPHAKKT7.1, 10) DcKUPHAKKT8, 11) DcKUPHAKKT10, 12) DcKUPHAKKT11 and 13) DcKUPHAKKT12. The nomenclature was proposed according to functions of homologous *Arabidopsis* genes. The evolution process tells that the similar structure and similar function of genes arise through replication event and gene duplication is the process which leads towards evolution [17]. The analysis revealed that *D. carota* contains 13 members of KUP/HAK/KT gene family as in *A. thaliana*. The AtHAK2, AtHAK6 and AtHAK11 are responsible for salinity response because their



**Figure 1:** Genome wide analysis conducted in plants so far.

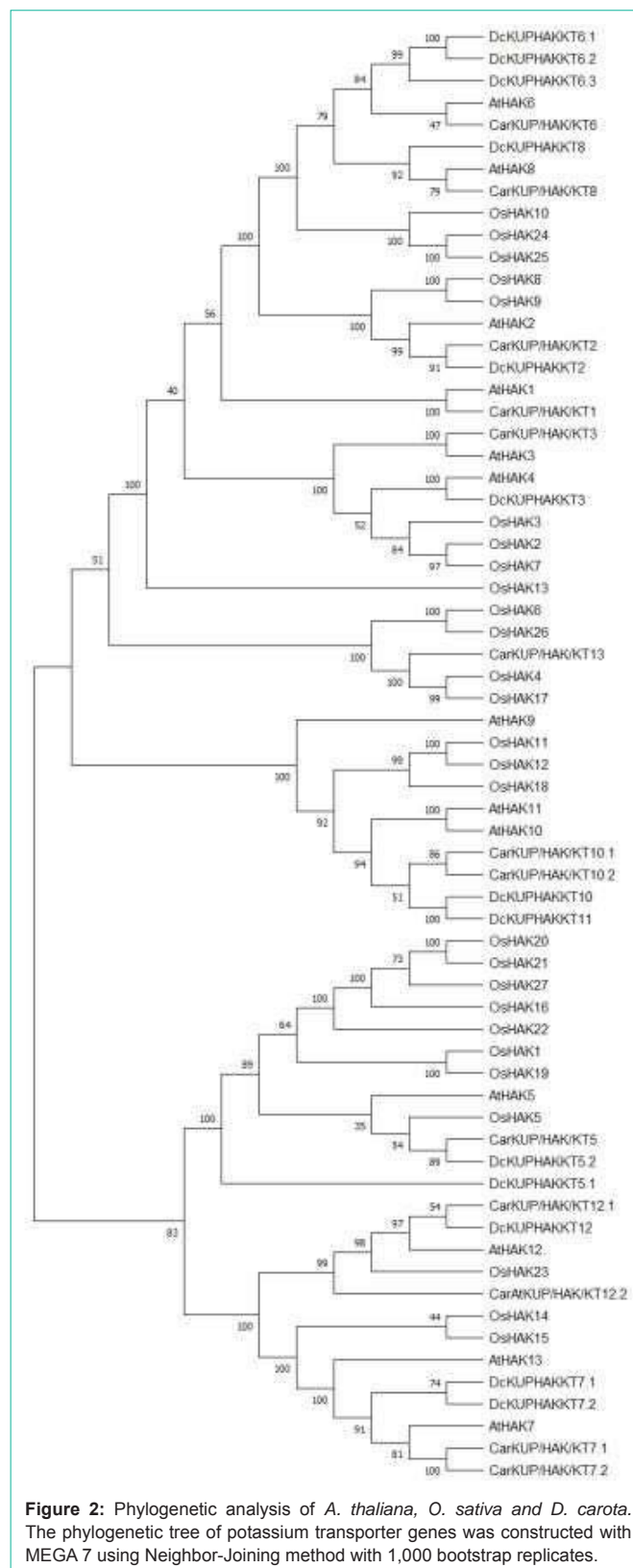
expression gets affected when salt concentration is increased [1]. Salinity is caused by reduced  $\text{Na}^+$  controlled by  $\text{AtHKT}_1$  and  $\text{AtHAK}_5$ , which is regulated by external  $\text{K}^+$  concentration [18].

The gene location on the chromosome from top to bottom was analysed. From the analysis, it was analyzed that all of the genes are present on chromosomes having number of 1-9 except 5 and 8. No gene is present on chromosome number 5 and 8. Chromosome location is helpful to find the location of gene on chromosome. Similarly, the exon count analysis reveals that its average range is 8-11, four genes have 9 exons, 4 genes have 8 exons, two genes contain 10 exons and 1 gene contains 11 exons. The presence of  $\text{K\_trans}$  domain in the identified sequence were confirmed using an online tool pfam (<http://pfam.xfam.org/>) [10] and SMART (SMART: Main page ([embl-heidelberg.de](http://www.ebi.ac.uk/EMBL-HEIDELBERG/SMART/))) [19].

Pfam and SMART server searches revealed that the most conserved domain in all sequences is  $\text{K\_trans}$  which show that it belongs to potassium transporter gene family (Table 1 and Table 2).

### Phylogenetic analysis

To characterize the evolutionary relationship between KUP/HAK/KT gene family of *A. thaliana*, *C. arietinum*, *O. sativa* and *D. carota*, MEGA 7.0.21 was used to generate the rooted tree by the neighbor joining method by the alignment of KUP/HAK/KT from both species (Figure 1). It is concluded that the KUP/HAK/KT gene family is common in almost all plant species. The evolutionary tree showed a close relationship between *O. sativa*, *C. arietinum*, *A. thaliana* and *D. carota*. This gene family helps in mediating the inward transport of  $\text{K}^+$  from Dilute  $\text{K}^+$  solutions as shown in OsHAK1 and OsHAK5 transporters [20]. As the KUP/HAK/KT transporters are multi gene family. For example, Arabidopsis has 13 KUP/HAK/KT genes and *Oryza sativa* has 27 KUP/HAK/KT genes in total [21]. Investigation shows that KUP/HAK/KT can be divided into four clusters which is confirmed by the phylogenetic analysis of full-length sequences of KUP/HAK/KT transporter gene family. The most studied gene members of KUP/HAK/KT transporter gene family belongs to clusterI and clusterII [22]. ClusterI gene members play essential role in potassium uptake when potassium concentration is low. So, it may be designated as high affinity potassium uptake transporters in *Arabidopsis* which may be have the same role in *D. carota* too [4]. Phylogenetic analysis results indicate that evolutionary



**Figure 2:** Phylogenetic analysis of *A. thaliana*, *O. sativa* and *D. carota*. The phylogenetic tree of potassium transporter genes was constructed with MEGA 7 using Neighbor-Joining method with 1,000 bootstrap replicates.

branches were constant with their assigned gene names. Introns have been found essential traits of eukaryotic gene families during the evolutionary process of multiple gene families [23].

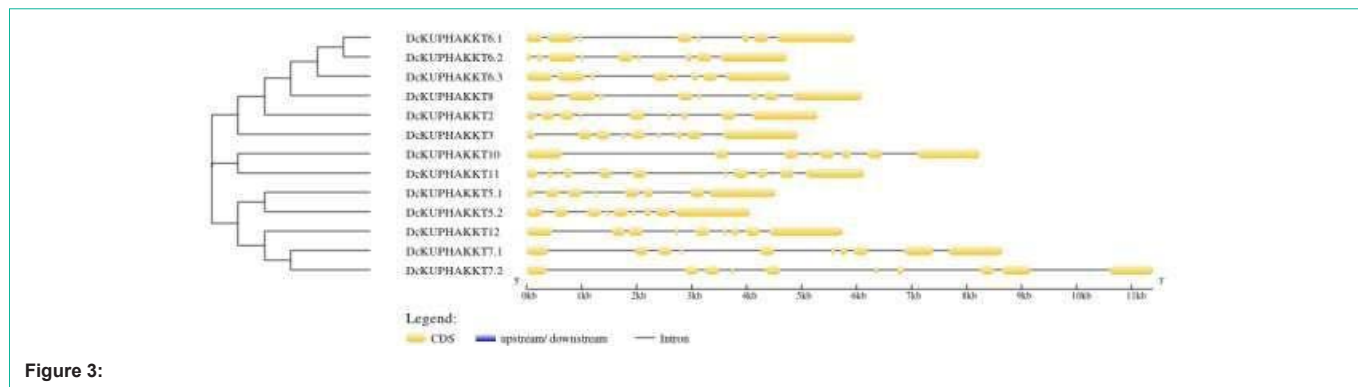


Figure 3:

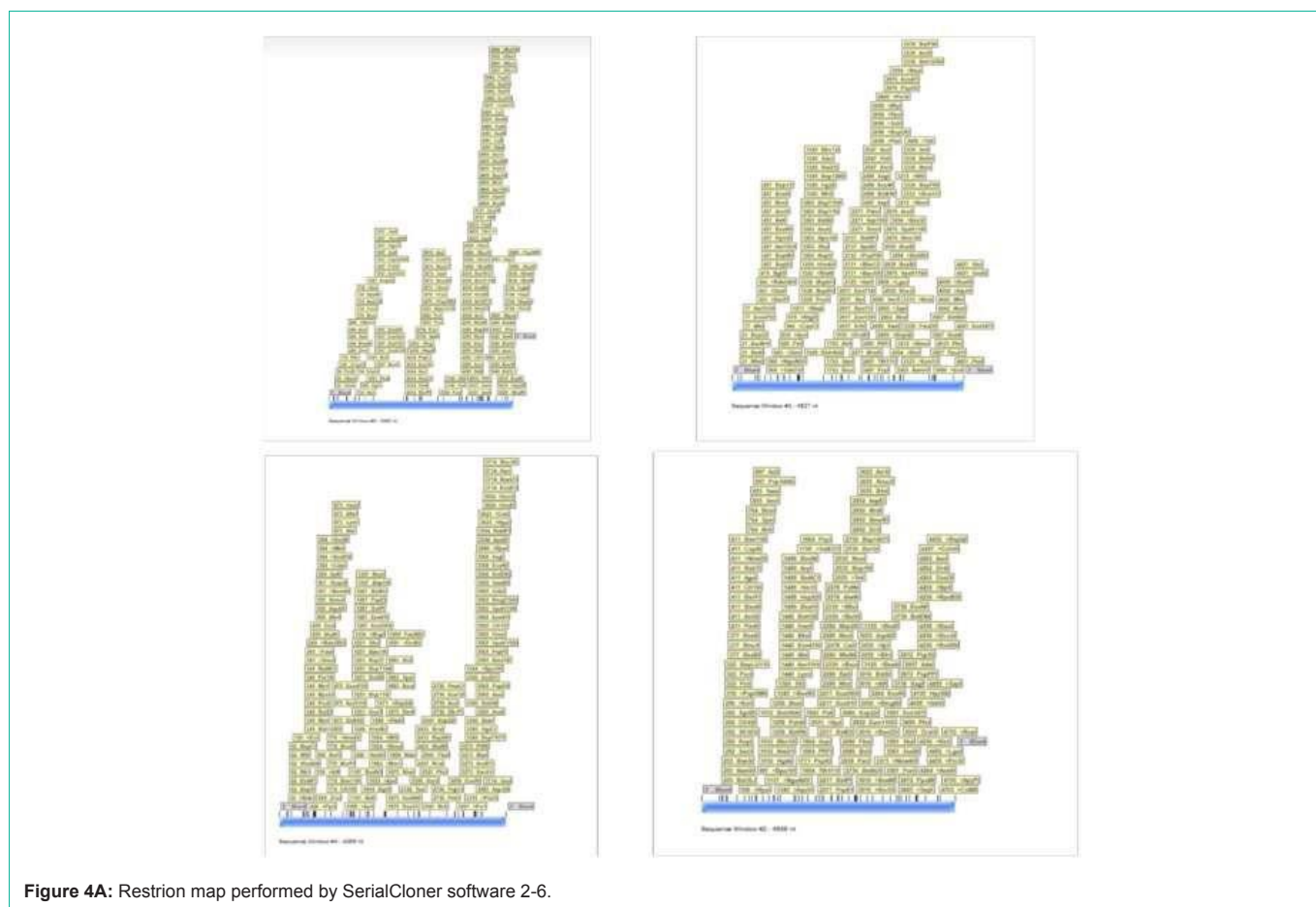


Figure 4A: Restrion map performed by SerialCloner software 2-6.

**Gene structure analysis**

Usually it is found that the position of introns/exons in orthologous genes are commonly well conserved in evolutionary times, but the structure of introns/exons is comparatively less conserved in paralogous genes. To study the structural differences of KUP/HAK/KT gene family we used Gene Structure Display tool (<http://gsds.gaolab.org/>) which analyzed the arrangements of introns and exons by comparing CDS sequences and Genomic sequences [24-29]. It shows that DcKUPHAKKT5.2 has more exonic regions than others. In contrast the longest intronic regions are present in DcKUPHAKKT10 and DcKUPHAKKT7.2 gene. The highest exon count is 11 in DcKUPHAKKT11 (Figure 2). It has been reported

that AtKUP2 gene plays important role in maintaining cell size. Because K<sup>+</sup> is the major solute in cell so any diminishing effect to the potassium homeostasis leads to the weakend cell turgor which causes reduction in cell size. Similarly, the gene in *D. carota* will also affect the cell size [4] (Figure 3).

**Mapping Restriction sites**

To find the restriction sites of identified sequence, SerialCloner2-6 was used. The genomic sequence of all the 13 gene members were saved in FASTA format and then each sequence was submitted to SerilCloner2-6 software and a graphic map of restriction sites were generated (Figure 4A-D).



Figure 4B:



Figure 4C:



Figure 4D:

### Conclusion

Potassium is the macronutrient of plants, it is uptaken by plants through various mechanism. High affinity potassium uptake through Potassium transporter is one of them. This study reported 13 gene members of KUP/HAK/KT potassium transporter gene family in *D. carota* (wild carrot). This study covers the genomic information, domain prediction, gene structure prediction and phylogenetic analysis. These genes showed a close phylogenetic relationship with *A. thaliana*, *C. arietinum* and *O. sativa*. This gene family is important for potassium transport. Different software like NCBIBLASTp, pfam, SMART and SerialCloner2-6 was used. Gene structure display server software were also used to conduct gene structure analysis. MEGA 7.0.21 software was used to make the phylogenetic tree for evolutionary study.

### References

1. Li W, Xu G, Alli A, Yu L. Plant HAK/KUP/KT K<sup>+</sup> transporters: Function and regulation. *Seminars in Cell & Developmental Biology*. 2018; 74: 133–141.

2. Liang M, Gao Y, Mao T, Zhang X, Zhang S, Zhang H, et al. Characterization and Expression of KT/HAK/KUP Transporter Family Genes in Willow under Potassium Deficiency, Drought, and Salt Stresses. *BioMed Research Interational*. 2020: e2690760.

3. Xie Q, Ma L, Tan P, Deng W, Huang C, Liu D, et al. Multiple High-Affinity K<sup>+</sup> Transporters and ABC Transporters Involved in K<sup>+</sup> Uptake/Transport in the Potassium-Hyperaccumulator Plant *Phytolacca acinosa* Roxb. *Plants*. 2020; 9: 470.

4. Grabov A. Plant KT/KUP/HAK Potassium Transporters: Single Family – Multiple Functions. *Annals of Botany*. 2007; 99: 1035–1041.

5. Feng X, Wang Y, Zhang N, Wu Z, Zeng Q, Wu J, Wu X, et al. Genome-wide systematic characterization of the HAK/KUP/KT gene family and its expression profile during plant growth and in response to low-K<sup>+</sup> stress in *Saccharum*. *BMC Plant Biology*. 2020; 20: 20.

6. MaoNi C, QingYu W, JinYu Z, ZhiYong Z, Jie D, YaXin Y. Identification and expression analysis of KUP/HAK/KT potassium transporter gene family in soybean [*Glycine max* (L.) Merr.]. *Acta Botanica Boreali-Occidentalia Sinica*. 2017; 37: 239–249.

7. Fikselová M, Šilhár S, Mareček J, Frančáková H. Extraction of carrot (*Daucus carota* L.) carotenes under different conditions. *Czech Journal of Food*

- Sciences. 2008; 26: 268–274.
8. Ma J, Xu Z, Tan G, Wang F, Xiong A. Distinct transcription profile of genes involved in carotenoid biosynthesis among six different color carrot (*Daucus carota* L.) cultivars. *Acta Biochimica et Biophysica Sinica*. 2017; 49: 817–826.
  9. Bateman A, Birney E, Cerruti L, Durbin R, Eddy SR, et al. The Pfam Protein Families Database. *Nucleic Acids Research*. 2002; 30: 276–280.
  10. El-Gebali S, Mistry J, Bateman A, Eddy SR, Luciani A, Potter SC, et al. The Pfam protein families database in 2019. *Nucleic Acids Research*. 2019; 47: D427–D432.
  11. Letunic I, Doerks T, Bork P. SMART 7: Recent updates to the protein domain annotation resource. *Nucleic Acids Research*. 2012; 40: D302–D305.
  12. Hall BG. Building Phylogenetic Trees from Molecular Data with MEGA. *Molecular Biology and Evolution*. 2013; 30: 1229–1235.
  13. Kumar S, Nei M, Dudley J, Tamura K. MEGA: A biologist-centric software for evolutionary analysis of DNA and protein sequences. *Briefings in Bioinformatics*. 2008; 9: 299–306.
  14. Hu B, Jin J, Guo A-Y, Zhang H, Luo J, Gao G. GSDS 2.0: An upgraded gene feature visualization server. *Bioinformatics*. 2015; 31: 1296–1297.
  15. Amara A.  $\alpha$  Globin Hemoglobinopathy as A Case Study: Mutants and Prototype Mutants: Are They Absent  $\alpha 0$ , Reduced  $\alpha^*$  or Recombinant? *Cellular & Molecular Medicine*. 2017.
  16. Thompson JD, Gibson TJ, Higgins DG. Multiple Sequence Alignment Using ClustalW and ClustalX. *Current Protocols in Bioinformatics*. 2003; 231–232.
  17. Shen C, Yuan J. Genome-Wide Investigation and Expression Analysis of K<sup>+</sup>-Transport-Related Gene Families in Chinese Cabbage (*Brassica rapa* ssp. *Pekinensis*). *Biochemical Genetics*. 2021; 59: 256–282.
  18. Wang Q, Guan C, Wang P, Lv M-L, Ma Q, Wu G-Q, et al. AtHKT1;1 and AtHAK5 mediate low-affinity Na<sup>+</sup> uptake in *Arabidopsis thaliana* under mild salt stress. *Plant Growth Regulation*. 2015; 75: 615–623.
  19. Schultz J, Copley RR, Doerks T, Ponting CP, Bork P. SMART: A web-based tool for the study of genetically mobile domains. *Nucleic Acids Research*. 2000; 28: 231–234.
  20. Santa-María GE, Oliferuk S, Moriconi JI. KT-HAK-KUP transporters in major terrestrial photosynthetic organisms: A twenty years tale. *Journal of Plant Physiology*. 2018; 226: 77–90.
  21. Gierth M, Mäser P, Schroeder JI. The Potassium Transporter AtHAK5 Functions in K<sup>+</sup> Deprivation-Induced High-Affinity K<sup>+</sup> Uptake and AKT1 K<sup>+</sup> Channel Contribution to K<sup>+</sup> Uptake Kinetics in *Arabidopsis* Roots. *Plant Physiology*. 2005; 137: 1105–1114.
  22. Gupta M, Qiu X, Wang L, Xie W, Zhang C, Xiong L, et al. KT/HAK/KUP potassium transporters gene family and their whole-life cycle expression profile in rice (*Oryza sativa*). *Molecular Genetics and Genomics: MGG*. 2008; 280: 437–452.
  23. Liang M, Gao Y, Mao T, Zhang X, Zhang S, Zhang H, et al. Characterization and expression of KT/HAK/KUP transporter family genes in willow under potassium deficiency, drought, and salt stresses. *BioMed Research International*. 2020.
  24. Aslam M, Fakhri B, Jakada BH, Zhao L, Cao S, Cheng Y, et al. Genome-Wide Identification and Expression Profiling of CBL-CIPK Gene Family in Pineapple (*Ananas comosus*) and the Role of AcCBL1 in Abiotic and Biotic Stress Response. *Biomolecules*. 2019; 9: 293.
  25. Ahn SJ, Shin R, Schachtman DP. Expression of KT/KUP Genes in *Arabidopsis* and the Role of Root Hairs in K<sup>+</sup> Uptake. *Plant Physiology*. 2004; 134: 1135–1145.
  26. Osakabe Y, Arinaga N, Umezawa T, Katsura S, Nagamachi K, Tanaka H, et al. Osmotic Stress Responses and Plant Growth Controlled by Potassium Transporters in *Arabidopsis*. *The Plant Cell*. 2013; 25: 609–624.
  27. Rigas S, Debrosses G, Haralampidis K, Vicente-Agullo F, Feldmann KA, Grabov A, et al. TRH1 Encodes a Potassium Transporter Required for Tip Growth in *Arabidopsis* Root Hairs. *The Plant Cell*. 2001; 13: 139–151.
  28. Scherzer S, Böhm J, Krol E, Shabala L, Kreuzer I, Larisch C, et al. Calcium sensor kinase activates potassium uptake systems in gland cells of Venus flytraps. *Proceedings of the National Academy of Sciences*. 2015; 112: 7309–7314.
  29. Véry A-A, Nieves-Cordones M, Daly M, Khan I, Fizames C, Sentenac H. Molecular biology of K<sup>+</sup> transport across the plant cell membrane: What do we learn from comparison between plant species? *Journal of Plant Physiology*. 2004; 171: 748–769.