

Short Communication

The Imaging and Dosimetry for Targeted Ra-223 Treatment for Metastatic Castration-Resistant Prostate Cancer

Matsuo S^{1*}, Mizokami A², Wakabayashi H¹, Nakajima K², Kudo T³ and Kinuya S¹

¹Department of Nuclear Medicine, Kanazawa University Hospital, Kanazawa, Japan

²Department of Urology, Kanazawa University, Japan

³Department of Radioisotope Medicine, Nagasaki University, Japan

*Corresponding author: Shinro Matsuo, Department of Nuclear Medicine, Kanazawa University Hospital, Takaramachi, Kanazawa, Japan

Received: February 07, 2018; Accepted: March 05, 2018; Published: March 12, 2018

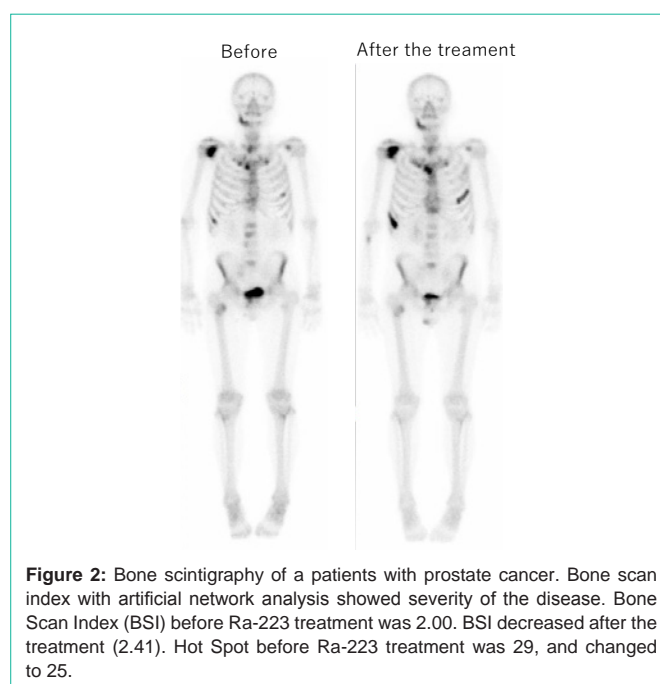
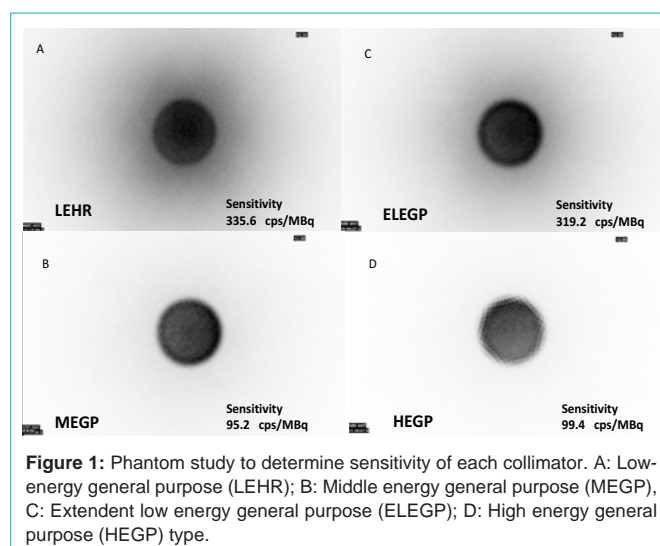
Short Communication

Prostate cancer at stage IV spreads to bone frequently, which occurs in up to 90% [1]. Bone metastasis is a substantial source of morbidity since it is related to bone pain and skeletal-related events [1]. ²²³Ra selectively targets bone metastases with alpha particle [2-3]. ²²³Ra was approved for the treatment of metastatic castration-resistant prostate cancer patients (CRPC) [2]. ²²³Ra also releases gamma rays accompanying alpha or beta rays. However, the therapeutic effect and its radiation dose assessment have not yet been adequately studied. The side effects and therapeutic effects of ²²³Ra radiation therapy by using radiation dosimetry for patients with castration-resistant prostate cancer needs to be evaluated [4-7].

Firstly we performed the investigation of phantom study using four types of collimators including low-energy general purpose, extended low energy general purpose, middle energy general purpose and high energy general purpose type (Figure 1). We observed that middle energy general purpose image was more efficient than a dedicated alpha detector which showed remarkably decreasing counting rates. We therefore constructed procedures and standards for handling ²²³Ra in clinical practice.

Bone scintigraphy can detect bone metastasis accurately. Bone scintigraphy was performed before and after the therapy in all subjects with CRPC, as well as the measurement of prostate specific antigen (PSA). Bone scan index and other indices by boneNAVI software version 1.0.1 of EXNI or FUJIFILM RI Farma were calculated [8]. BoneNAVI is a first update of the Japanese version. This software, using artificial intelligence, has a high sensitivity for diagnosing bone metastasis. Our preliminary findings obtained in our institution was that bone scan index was useful in monitoring the patients regarding pre- and post-treatment and it can be a future prognostic indicator for ²²³Ra treatment when alpha treatment can be monitored with bone scan index of boneNAVI (Figure 2).

For evaluation of whole body distribution of ²²³Ra, planar images



and SPECT/CT imaging can be carried out by using SPECT/CT apparatus. Detailed information on bone metastasis site and non-bone metastasis accumulation site and irradiation dose evaluation was possibly obtained with radiation dosimetry (Figure 3). Absorbed dose can be calculated by using OLONDA/EXM ver.1.1 (HERMES) [9-11]. The accumulation of normal tissue was found to be low in

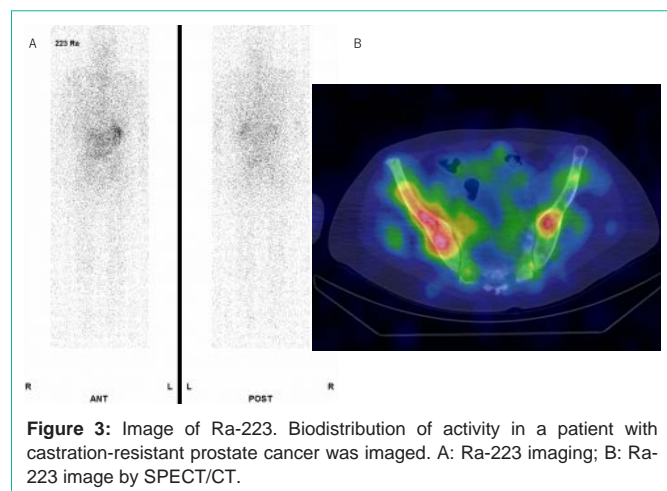


Figure 3: Image of Ra-223. Biodistribution of activity in a patient with castration-resistant prostate cancer was imaged. A: Ra-223 imaging; B: Ra-223 image by SPECT/CT.

relation to targeted tumor cell. We also observed symptom bone pain regarded as side effects in half of the subjects. The side effects included as well as side effect of bone pain loss, exacerbation, loss of appetite etc. during the treatment. There was a significant relationship between the site of ^{223}Ra accumulation and the symptom of side effects by the treatment [12]. The evaluation of radiation exposure dose in the non-target organ including intestine, bone and urinary cyst could be recognized with ^{223}Ra imaging. Alpha treatment can be monitored by nuclear medicine survey detectors under optimization of measurements. Side effect might be predicted with imaging of ^{223}Ra .

References

- Jacobs SC. Spread of prostatic cancer to bone. *Urology*. 1983; 21: 337–344.
- Nilsson S, Franzen L, Parker C, Tyrrell C, Blom R, Tennvall J, et al. Bone-targeted radium-223 in symptomatic, hormone refractory prostate cancer: a randomised, multicentre, placebo-controlled phase II study. *Lancet Oncol*. 2007; 8: 587–594.
- Sartor O, Coleman RE, Nilsson S, Heinrich D, Helle SI, O'Sullivan JM, et al. An exploratory analysis of alkaline phosphatase, lactate dehydrogenase, and prostate-specific antigen dynamics in the phase 3 ALSYMPCA trial with radium-223. *Ann Oncol*. 2017; 28: 1090–1097.
- Parker C, Nilsson S, Heinrich D, Helle SI, O'Sullivan JM, Fossa SD, et al. Alpha emitting radium-223 and survival in metastatic prostate cancer. *N Engl J Med*. 2013; 369: 213–223.
- Matsubara N, Nagamori S, Wakumoto Y, Uemura H, Kimura G, Yokomizo A, et al. Phase II study of radium-223 dichloride in Japanese patients with symptomatic castration-resistant prostate cancer. *Int J Clin Oncol*. 2017; 23: 173–180.
- Yoshida K, Kaneta T, Takano S, Sugiura M, Kawano T, Hino A, et al. Pharmacokinetics of single dose radium-223 dichloride (BAY 88- 8223) in Japanese patients with castration-resistant prostate cancer and bone metastases. *Ann Nucl Med*. 2016; 30: 453–460.
- Hindorf C, Chittenden S, Aksnes AK, Parker C, Flux GD. Quantitative imaging of ^{223}Ra -chloride (Alpharadin) for targeted alpha emitting radionuclide therapy of bone metastases. *Nucl Med Commun*. 2012; 33: 726–732.
- Shintawati R, Achmad A, Higuchi T, Shimada H, Hirasawa H, Arisaka Y, et al. Evaluation of bone scan index change over time on automated calculation in bone scintigraphy. *Ann Nucl Med*. 2015; 29: 911–920.
- Stabin MG, Sparks RB, Crowe E. OLINDA/EXM: the second-generation personal computer software for internal dose assessment in nuclear medicine. *J Nucl Med*. 2005; 46: 1023–1027.
- Carrasquillo JA, O'Donoghue JA, Pandit-Taskar N, Humm JL, Rathkopf DE, Slovin SF, et al. Phase I pharmacokinetic and biodistribution study with escalating doses of ^{223}Ra -dichloride in men with castration-resistant metastatic prostate cancer. *Eur J Nucl Med Mol Imaging*. 2013; 40: 1384–1393.
- Lassmann M, Nosske D. Dosimetry of ^{223}Ra -chloride: dose to normal organs and tissues. *Eur J Nucl Med Mol Imaging*. 2013; 40: 207–212.
- Anand A, Morris MJ, Kaboteh R, Reza M, Trägårdh E, Matsunaga N, et al. A preanalytic validation study of automated bone scan index: Effect on accuracy and reproducibility due to the procedural variabilities in bone scan image acquisition. *J Nucl Med*. 2016; 57: 1865–1871.