

Case Report

Multiple Myeloma or Multiple Plasmacytoma? Case Report

Silva MC*, Ramôa A, Mendes M and Vasconcelos M

Department of Internal Medicine, Hospital de Braga, Portugal

*Corresponding author: Silva MC, Department of Internal Medicine, Hospital de Braga, Portugal

Received: April 24, 2020; Accepted: June 01, 2020;

Published: June 08, 2020

Abstract

Extramedullary Plasmacytoma is a rare malignant immunoglobulin producing tumor that results from the proliferation of monoclonal plasmocytes and progresses to a systemic form, Multiple Myeloma, in the absence of early diagnosis and treatment. We report the case of a 58-year-old man hospitalized with a pneumococcal pneumonia causing hypoxemic respiratory failure associated with bacteremia, acute kidney injury and anemia at admission. During hospitalization there was progressive hypercalcemia with neurological damage and he presented mild and persistent epistaxis from the right nostril. The patient also reported complaints of nasal obstruction and right posterior chest pain with a few months of evolution. From the study carried out it was detected the presence of a serum monoclonal peak of G-immunoglobulins and serum and urinary Kappa light chains. Histological examination of the nasal mass revealed characteristics of plasmacytoma and bone biopsy demonstrated the presence of 28% plasmocytes in the bone marrow. Later a CT scan of the chest was done that detected two other plasmacytomas in the media stinum with an anterior and posterior location to the sternum.

Keywords: Extramedullary plasmacytoma; Multiple myeloma

Case Presentation

Plasmacytoma is a rare localized malignant tumor with an incidence of 0.34/10000 people/year that results from the proliferation of Immunoglobulin (Ig) producing monoclonal plasmocyte cells that is located outside the bone marrow [1,2]. There are two main types which are bone plasmacytoma that corresponds to 2/3 of the cases and is predominantly located in the axial skeleton and extramedullary plasmacytoma that corresponds to about 4% of plasma cell disorders [1,2]. The most frequent location (about 80% of all cases) of extramedullary plasmacytoma is in the nasal cavity or nasopharynx and the main signs are epistaxis, rhinorrhea and nasal obstruction [1,3]. The diagnosis is established by histological examination of the lesion that usually demonstrates monoclonal infiltration of plasmocytic cells and by excluding systemic involvement and target organ damage. Two thirds of the patients are male and the average age at diagnosis is between 55 and 60 years old [1]. The etiology is unknown but chronic stimulation of the airway and digestive tract mucosa by inhaled irritants or viral infections is considered likely [1]. Multiple Myeloma is a plasmocytes tumor that produces monoclonal Ig that represents more than 10% of hematological neoplasms with an incidence of 4/100000 people/year and is more frequent in men over 65 years old [1]. The diagnosis implies an infiltration of more than 10% of clonal plasmocytes in the bone marrow or histopathological evidence of extramedullary plasmacytoma associated with the presence of myeloma-defining events which correspond to target organ dysfunction caused by the infiltration (anemia, hypercalcemia, osteolytic bone lesions, kidney injury) or one of the following malignancy biomarkers such as bonemarrow infiltration greater than 60% of clonal plasmocytes; involved/uninvolved serum free Ig light chain ratio >100 (provided that the free Ig light chain is >100mg/L)

or more than one focal bone lesion on Magnetic Resonance Imaging (MRI) [4].

We present the case of a 58-year-old man with smoking and moderate alcohol habits and history of two low respiratory infections in the last six months. He went to the emergency department for dyspnea, fever and productive cough with thick yellow sputum with three days of evolution and complaints of posterior thoracalgia. He was admitted for bilateral pneumococcal pneumonia and small-volume bilateral pleural effusion causing hypoxemic respiratory failure associated with bacteremia to *Streptococcus Pneumoniae*, macrocytic anemia (10.2g/dL, GV 105fl) and acute kidney injury (Cr 1.4mg/dl). Treatment with oxygen, antibiotic and fluid therapy was instituted. During hospitalization the patient presented progressive improvement of initial symptoms but referred the maintenance of posterior chest pain at the level of the costal grid, without significant improvement with analgesic, stating that it had several months of evolution. He presented a progressive worsening of the neurological state with drowsiness and slowing of the speech and during the physical examination epistaxis was observed through the right nasal cavity. When questioned the patient reported sporadic episodes of mild epistaxis and a sensation of right nasal obstruction and hearing loss with a few months of evolution. Otorhinolaryngology (ORL) collaboration was requested which observed a ulcerated neoplastic lesion in the right nasal cavity that obliterated it, starting at the cavum. Biopsy and Computed Tomography (CT) of the sinuses were performed. Analytically there was progressive hypercalcemia (serum maximum 1.66 mmol/L) absent at admission and a complementary study was conducted to address the cause of hypercalcemia. The serum protein electrophoresis revealed a monoclonal peak in the gamma zone, immuno electrophoresis



Figure 1: CT scan of the head showing a plasmacytoma in the right nasal cavity.

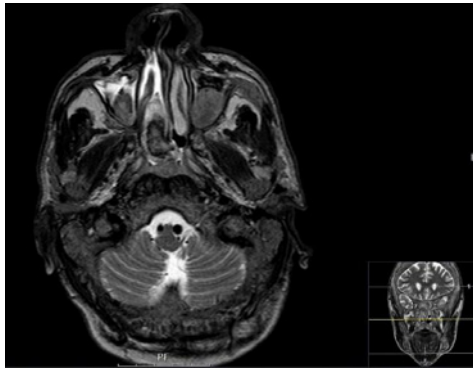


Figure 2: MRI of the head showing a plasmacytoma in the right nasal cavity.

revealed a predominance of IgG/Kappa (IgA 28mg/dl; IgG6207mg/dl; IgM 10.1mg/dl) and free Kappa Ig light chains were presented in serum (Lambda 13.2mg/dl; Kappa 2050mg/dl; K/L 155) and urine (Kappa 24.6mg/dl; Lambda 0.37mg/dl). We also found an elevation on B2-microglobulin (18650ng/mL). Treatment with intensive fluid therapy and diuretic was instituted without effect so subsequently sodium pamidronate was administered with resolution of chest pain, recovery of neurological status and decrease in serum calcium levels. There was also resolution of the acute kidney injury. The CT scan of the sinuses (Figure 1) demonstrated an “expressive opacification of the right nasal cavity due to a formation with soft tissue density, polypoid, which conditions demineralization of the turbinates bulging and demineralization of the medial wall of the maxillary sinus occupying the choana and nasopharynx (...) it may be an inflammatory polyp or a neoplastic lesion namely inverted papilloma (...) ganglia with reactive characteristics are present in the submandibular chains. Bilateral lytic lesions in the base and skull stand out. The lytic process reaches the bone elements of the cervical spine where it takes a multifocal pattern. The clavicles are involved bilaterally”. Subsequently he performed a MRI (Figure 2) of the sinuses which revealed “marked involvement of the bone matrix in the cranial vault, at the base of the skull, in the maxillofacial mass and also in the cervical vertebrae associated with an epidural soft tissue component suggesting infiltration of the bone marrow of

likely malignant nature. A heterogeneous polypoid lesion in the right naso-choanal position is confirmed. In the study of the neck an adenopathic conglomerate of the accessory spinal chains is observed”. The histological examination of the nasal lesion revealed exclusively necrotic tissue. At discharge to external consultation of oncology the patient presented pneumonia resolution without respiratory failure or pain complaints, normal state of consciousness, renal function and normocalcemia but maintained macrocytic anemia (8.4g/dL). He was reevaluated by ORL who performed a new nasal mass biopsy that revealed “flaps of the respiratory and dermopapillary mucosa in whose chorion a neoplastic population of plasmacytic cells is identified”. Later a CT scan of the chest showed moderate bilateral pleural effusion and an area of soft tissue densification in the mediastinum posterior to the sternum with 43X20mm and another with 3cm anterior to the sternum compatible with two plasmacytomas, as well as multiple lytic lesions dispersed in the skeleton. Myelogram and bone biopsy were performed which immunophenotypic study revealed the presence of 28.14% of clonal plasma cells for IgG/Kappa chains compatible with Multiple Myeloma. The cytogenetic and FISH study demonstrated amplification or rearrangement of the CCND1 gene in 56% of the nuclei. He performed a lumbar puncture that revealed no central nervous system invasion and repeated analytical study that showed a worsening in renal function and maintenance of anemia. Induction treatment with Bortezomib, Lenalidomide and Dexamethasone was proposed followed by consolidation with intensive chemotherapy and bone marrow auto-transplantation.

Discussion/Conclusion

We present a rare case of an extramedullary plasmacytoma in a 58-year-old caucasian man with no relevant medical history. Our study was initially directed to the cause of hypercalcemia that manifested during hospitalization and that conditioned neurological repercussions in a patient with pneumonia, respiratory insufficiency, acute kidney injury and anemia at admission. The anamnesis brought very important data such as the existence of two respiratory infections in the previous six months in addition to the episode of bilateral pneumonia with bacteremia that motivated hospitalization. In fact infections are frequent complications in patients with multiple myeloma and responsible for high morbidity and mortality conditioned by the state of immunodeficiency promoted by hypogammaglobulinemia and other immune disorders [5]. The presence of posterior chest pain with several months of evolution also corresponds to characteristic findings of the disease. Complementary diagnostic tests made possible to objectify the presence of osteolytic bone lesions in the skull, vertebrae and skeleton and the suspicion diagnosis was corroborated by several biomarkers namely the presence of a monoclonal peak of IgG, free Ig light chains in serum and urine and the presence of 28% clonal plasma cells in the bone marrow. However new data from physical examination during hospitalization, specifically the presence of unilateral epistaxis combined with complaints of ipsilateral nasal obstruction and the observation of a mass in the right nasal cavity supported by the previous blood results raised the hypothesis that it was an extramedullary plasmacytoma as a differential diagnosis of squamous cell carcinoma given the patient's habits. Thus, from the findings described above the patient presented diagnostic criteria for Multiple Myeloma, the systemic form of the disease that probably spread from

an extramedullary plasmacytoma [4]. Variable rates of progression to Multiple Myeloma have been described in the literature from 10% in 3 years to 30-50% in 2.5 years [1,4]. In fact the patient had been neglecting local signs and symptoms for several months which conditioned this late diagnosis and made it impossible to use focal radiotherapy and/or surgery which constitutes first-line treatment [3] with the aim of local control and disease remission since it is a tumor with high radio sensitivity and success rates above 90% [1,2].

References

1. Lai C, Hsieh H, Chen H, Chao C, Hua C, Tai C, et al. Clinical Features of Head and Neck solitary extramedullary plasmacytoma in Taiwan. *In vivo*. 2020; 34: 261-265.
2. Elsayad K, Oertel M, Konig L, Huske S, LeRay, E, Meheissen M, et al. Maximizing the clinical benefit of radiotherapy in solitary plasmacytoma: an International Multicentre Analysis. *Cancers*. 2020; 13: 12.
3. DiStadio A, Ralli M, Messineo D, Ciancia G, Cascone A, Salzano G, et al. Septal nasal extramedullary plasmacytoma: a rare tumor in an unusual area. *Ear, Nose and Throat Journal*. 2020; 1-3.
4. Rajkumar S, Dimopoulos M, Palumbo A, Blade J, Merlini G, Maeos M, et al. International myeloma Working Group update criteria for the diagnosis of multiple myeloma. *Review. Lancet Oncology*. 2015; 15.
5. Blimark C, Holmerg E, Mellqvist U, Långgren O, Bjoorkholm M, Hultcrantz M, et al. Multiple myeloma and infections: a population based study on 9253 multiple myeloma patients. *Haematologica*. 2015; 100: 107-113.