

## Clinical Image

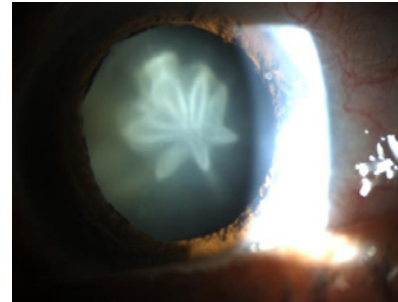
# When the Trauma Draws a Rose: Rosette Cataract

**Madbouhi K\* and Cherkaoui O**

Ophtalmologie A, Hôpital des Spécialités, Université Mohammed V Souissi, Rabat, Morocco

**\*Corresponding authors:** Madbouhi K, Ophtalmologie A, Hôpital des Spécialités, Université Mohammed V Souissi, Quartier Souissi, Rabat, Morocco**Received:** July 27, 2021; **Accepted:** August 12, 2021;**Published:** August 19, 2021**Clinical Image**

A 40-year-old male patient referred to the ophthalmologic emergency room for complaints of diminution of vision in the left eye since three months after a trauma. Examination of the left eye showed a corrected visual acuity of 20/70. Slit-lamp examination revealed a rosette cataract (Figure 1). The patient underwent phacoemulsification with implantation of an IOL in the bag. The rosette cataract is a posterior subcapsular cataract due to a violent contusion with a closed globe. It can develop in the hours that follow, or on the contrary several years later.



**Figure 1:** Slit lamp view of the left eye's rosette cataract.